

Lists of structure factors, anisotropic thermal parameters, H-atom coordinates and complete geometry have been deposited with the British Library Document Supply Centre as Supplementary Publication No. SUP 55376 (22 pp.). Copies may be obtained through The Technical Editor, International Union of Crystallography, 5 Abbey Square, Chester CH1 2HU, England. [CIF reference: CR1017]

## References

- Beurskens, P. T. (1984). *DIRDIF*. An automatic procedure for phase extension and refinement of difference structure factors. Tech. Rep. 1984/1. Univ. of Nijmegen, The Netherlands.
- Gilmore, C. J. (1984). *J. Appl. Cryst.* **17**, 42–46.
- Hua, D. H., Bharathi, S. N., Panangadan, J. A. K. & Tsujimoto, A. (1991). *J. Org. Chem.* **56**, 6998–7007.
- Johnson, C. K. (1965). *ORTEP*. Report ORNL-3794. Oak Ridge National Laboratory, Tennessee, USA.
- Kovach, J. S., Ames, M. M., Powis, G., Moertel, C. G., Hahn, R. G. & Cregan, E. T. (1979). *Cancer Res.* **39**, 4540–4544.
- Molecular Structure Corporation (1985). *TEXSAN. TEXRAY Structure Analysis Package*. MSC, 3200 Research Forest Drive, The Woodlands, TX 77381, USA.
- Molecular Structure Corporation (1988). *MSC/AFC Diffractometer Control Software*. MSC, 3200 Research Forest Drive, The Woodlands, TX 77381, USA.
- Vollhardt, K. P. C. (1987). *Organic Chemistry*, p. 119. New York: W. H. Freeman.

*Acta Cryst.* (1992). **C48**, 2090–2092

## Structure of an 11-Membered Cyclic Silyl Enol Ether from Condensation of Methacrolein and a Pseudoephedrine-Derived *O*-Silyl Ketene *N,O*-Acetal

WILLIAM P. SCHAEFER, VIJAYA SUBRAMANIAN AND ANDREW G. MYERS

*Division of Chemistry and Chemical Engineering† and The Beckman Institute, Mail Code 139-74, California Institute of Technology, Pasadena, California 91125, USA*

(Received 20 February 1992; accepted 25 June 1992)

### Abstract

The title compound, (4*S*,5*S*,8*R*,10*Z*)-2,2,5,6,8,10-hexamethyl-4-phenyl-1,3-dioxo-6-aza-2-silacycloundec-10-en-7-one, crystallizes with two virtually identical molecules in the asymmetric unit, each with the same absolute configuration. Bond distances and angles are normal; the closest approaches across the ring between non-bonded atoms are all greater than

3.35 Å. The amide and enol ether groups are planar to within  $\pm 0.06$  Å.

### Comment

The pseudoephedrine-derived *O*-silyl ketene *N,O*-acetal (1) undergoes facile aldol addition reactions with aldehydes to form 9-membered cyclic siloxane condensation products (Myers, Widdowson & Kukkola, 1992).  $\alpha,\beta$ -Unsaturated aldehydes react differently, forming, in the case of methacrolein, the 11-membered cyclic silyl enol ether (2) (Myers & Subramanian, 1992). The structure of this crystalline material has been established unambiguously by X-ray crystallography.

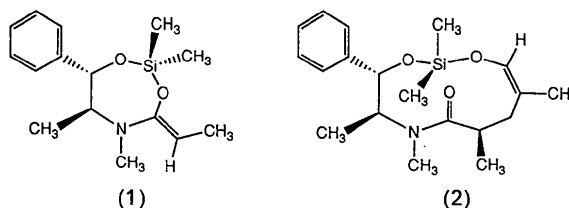


Fig. 1 shows the two independent molecules; both drawings have the same orientation relative to the least-squares plane of all their atoms, emphasizing their great similarity. Fig. 2 is a packing drawing showing the molecules in the unit cell. Bond distances and angles in the two independent molecules agree well; average values are quoted here, together with the higher or highest e.s.d.'s of the individual bonds. The Si—C and Si—O lengths average 1.842 (6) and 1.636 (3) Å. The angles at silicon differ from 109.5° by an average of 3.1°. There is some evidence of opening of the ring at the internal O atoms, where angles average 125.2 (9)°; the C—O distances, however, are normal [1.443 (5) Å to C1, 1.376 (6) Å to C17]. Other internal angles in the 11-membered ring are close to expected values. The grouping C8—N(C10)—C11(O3)—C12 is nearly planar in both molecules, with similar deviations from the least-squares plane. In molecule *A*, the two 'end' atoms, C8 and C12, are 0.057 Å out of the plane and the inner atoms (N, C10, C11 and O3) are −0.011, −0.045, −0.006 and −0.052 Å out of the plane respectively. In molecule *B*, the comparable distances are +0.047, and −0.017, −0.030, −0.009 and −0.037 Å. The non-bonded distances across the ring are all at or greater than van der Waals distances: O1...C10 3.42 and 3.48 Å, O2...C11 3.30 and 3.33 Å, O1...O3 3.66 and 3.67 Å, O2...O3 3.51 and 3.56 Å. Intermolecular contacts are also all at van der Waals distances or greater, the shortest (O2*b*...H4*b*) being 2.65 Å. The shortest H...H contact is 2.38 Å compared with an expected value of 2.4 Å.

† Contribution No. 8557.

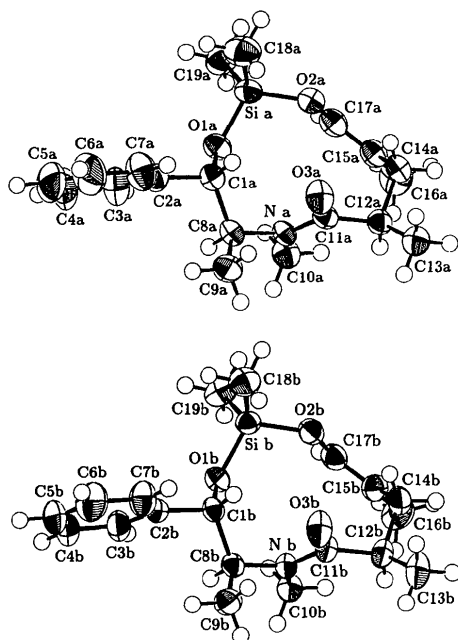


Fig. 1. An ORTEP drawing of molecules *A* (top) and *B* (bottom) with 50% probability ellipsoids showing the numbering system for the non-H atoms. H atoms are shown as spheres of arbitrary small diameter.

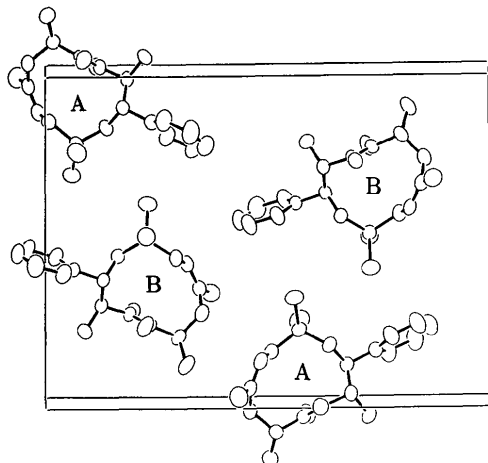


Fig. 2. An ORTEP projection of the contents of one unit cell onto the *bc* plane (one unit cell outlined). The molecules *A* and *B* are so indicated; H atoms are not shown. The *b* axis is horizontal.

## Experimental

### Crystal data

$C_{19}H_{29}NO_3Si$

$M_r = 347.53$

Monoclinic

$P2_1$

$a = 6.562(4) \text{ \AA}$

$b = 20.473(11) \text{ \AA}$

$c = 15.202(6) \text{ \AA}$

$\beta = 94.73^\circ$

$D_x = 1.13 \text{ Mg m}^{-3}$

Mo  $K\alpha$  radiation

$\lambda = 0.71073 \text{ \AA}$

Cell parameters from 25 reflections

$\theta = 14\text{--}16^\circ$

$\mu = 0.125 \text{ mm}^{-1}$

$T = 293 \text{ K}$

$V = 2035.3(18) \text{ \AA}^3$

$Z = 4$

$0.65 \times 0.35 \times 0.18 \text{ mm}$

### Data collection

Enraf-Nonius CAD-4 diffractometer

$\omega$  scans

Absorption correction: none

7473 measured reflections

3685 independent reflections

3685 observed reflections

$R_{int} = 0.026$

$\theta_{max} = 25^\circ$

$h = -7 \rightarrow 7$

$k = -24 \rightarrow 24$

$l = 0 \rightarrow 18$

3 standard reflections

frequency: 150 min

intensity variation: slight

linear decay

### Refinement

Refinement on  $F^2$

Final  $R = 0.043$  for  $F_o^2 > 0$

Final  $R = 0.034$  for

$F_o^2 > 3\sigma(F_o^2)$

$wR = 0.05$

$S = 1.72$

3685 reflections

432 parameters

H-atom parameters not refined

$w = 1/[\sigma^2(F_o^2) + (0.014)F^2]$

$(\Delta/\sigma)_{max} = 0.01$

$\Delta\rho_{max} = 0.19 \text{ e \AA}^{-3}$

$\Delta\rho_{min} = -0.19 \text{ e \AA}^{-3}$

Atomic scattering factors

from Cromer & Waber

(1974), Cromer (1974)

Table 1. Fractional atomic coordinates and equivalent isotropic thermal parameters ( $\text{\AA}^2$ )

$$U_{eq} = \frac{1}{3} \sum_i \sum_j U_{ij} a_i^* a_j^* a_i \cdot a_j$$

|      | <i>x</i>    | <i>y</i>   | <i>z</i>    | $U_{eq}$    |
|------|-------------|------------|-------------|-------------|
| Sia  | 0.8192 (2)  | 0.5709     | 0.2286 (1)  | 0.0480 (2)  |
| O1a  | 0.8906 (3)  | 0.6384 (1) | 0.1832 (2)  | 0.0479 (6)  |
| O2a  | 0.8445 (4)  | 0.5084 (1) | 0.1626 (2)  | 0.0506 (6)  |
| C1a  | 0.7693 (5)  | 0.6772 (2) | 0.1200 (2)  | 0.0432 (8)  |
| C2a  | 0.7234 (6)  | 0.7420 (2) | 0.1616 (2)  | 0.0521 (9)  |
| C3a  | 0.8751 (7)  | 0.7767 (2) | 0.2091 (3)  | 0.0728 (12) |
| C4a  | 0.8357 (10) | 0.8370 (3) | 0.2444 (4)  | 0.0998 (17) |
| C5a  | 0.6416 (12) | 0.8636 (3) | 0.2314 (4)  | 0.1039 (19) |
| C6a  | 0.4920 (9)  | 0.8302 (3) | 0.1847 (4)  | 0.1000 (17) |
| C7a  | 0.5299 (7)  | 0.7698 (2) | 0.1495 (3)  | 0.0762 (13) |
| C8a  | 0.8889 (5)  | 0.6864 (2) | 0.0381 (2)  | 0.0447 (8)  |
| C9a  | 0.7724 (6)  | 0.7268 (2) | -0.0332 (2) | 0.0622 (10) |
| Na   | 0.9627 (4)  | 0.6244 (1) | 0.0035 (2)  | 0.0392 (6)  |
| C10a | 1.1854 (5)  | 0.6178 (2) | 0.0095 (2)  | 0.0522 (9)  |
| C11a | 0.8283 (5)  | 0.5798 (2) | -0.0321 (2) | 0.0414 (8)  |
| C12a | 0.6415 (3)  | 0.5879 (1) | -0.0300 (2) | 0.0586 (7)  |
| O3a  | 0.9030 (5)  | 0.5187 (2) | -0.0757 (2) | 0.0434 (8)  |
| C13a | 0.7700 (6)  | 0.5051 (2) | -0.1603 (3) | 0.0609 (10) |
| C14a | 0.8975 (6)  | 0.4602 (2) | -0.0114 (3) | 0.0546 (10) |
| C15a | 1.0609 (6)  | 0.4611 (2) | 0.0626 (3)  | 0.0523 (10) |
| C16a | 1.2705 (7)  | 0.4359 (2) | 0.0445 (3)  | 0.0811 (13) |
| C17a | 1.0295 (6)  | 0.4844 (2) | 0.1412 (3)  | 0.0533 (10) |
| C18a | 0.5445 (6)  | 0.5720 (2) | 0.2467 (3)  | 0.0799 (12) |
| C19a | 0.9895 (7)  | 0.5606 (2) | 0.3304 (3)  | 0.0705 (11) |
| Sib  | 0.1939 (1)  | 0.7299 (1) | 0.4965 (1)  | 0.0421 (2)  |
| O1b  | 0.2820 (3)  | 0.6653 (1) | 0.5499 (1)  | 0.0423 (5)  |
| O2b  | 0.2422 (3)  | 0.7965 (1) | 0.5547 (2)  | 0.0492 (6)  |
| C1b  | 0.1829 (4)  | 0.6315 (2) | 0.6176 (2)  | 0.0371 (7)  |
| C2b  | 0.1220 (5)  | 0.5642 (2) | 0.5847 (2)  | 0.0417 (7)  |
| C3b  | 0.2651 (6)  | 0.5238 (2) | 0.5515 (3)  | 0.0611 (10) |
| C4b  | 0.2135 (8)  | 0.4604 (2) | 0.5254 (3)  | 0.0773 (13) |
| C5b  | 0.0176 (9)  | 0.4381 (2) | 0.5319 (3)  | 0.0833 (16) |
| C6b  | -0.1246 (8) | 0.4777 (2) | 0.5634 (4)  | 0.0882 (15) |
| C7b  | -0.0724 (6) | 0.5405 (2) | 0.5903 (3)  | 0.0675 (11) |
| C8b  | 0.3321 (4)  | 0.6274 (2) | 0.7002 (2)  | 0.0387 (7)  |
| C9b  | 0.2464 (6)  | 0.5896 (2) | 0.7750 (2)  | 0.0546 (9)  |
| Nb   | 0.4128 (3)  | 0.6916 (1) | 0.7301 (2)  | 0.0358 (6)  |
| C10b | 0.6341 (5)  | 0.6988 (2) | 0.7282 (2)  | 0.0451 (8)  |
| C11b | 0.2842 (5)  | 0.7366 (2) | 0.7591 (2)  | 0.0406 (7)  |
| O3b  | 0.0980 (3)  | 0.7267 (1) | 0.7558 (2)  | 0.0591 (7)  |

|      |             |            |            |             |
|------|-------------|------------|------------|-------------|
| C12b | 0.3670 (5)  | 0.8013 (2) | 0.7979 (2) | 0.0458 (8)  |
| C13b | 0.2527 (6)  | 0.8191 (2) | 0.8777 (3) | 0.0656 (11) |
| C14b | 0.3402 (6)  | 0.8541 (2) | 0.7260 (3) | 0.0554 (10) |
| C15b | 0.4870 (5)  | 0.8482 (2) | 0.6558 (3) | 0.0512 (9)  |
| C16b | 0.7008 (6)  | 0.8737 (2) | 0.6771 (3) | 0.0732 (12) |
| C17b | 0.4357 (5)  | 0.8206 (2) | 0.5791 (2) | 0.0495 (9)  |
| C18b | -0.0888 (5) | 0.7296 (2) | 0.4781 (3) | 0.0633 (10) |
| C19b | 0.3273 (6)  | 0.7321 (2) | 0.3951 (2) | 0.0647 (10) |

Lists of structure factors, anisotropic thermal parameters, H-atom coordinates and complete geometry have been deposited with the British Library Document Supply Centre as Supplementary Publication No. SUP 55244 (23 pp.). Copies may be obtained through The Technical Editor, International Union of Crystallography, 5 Abbey Square, Chester CH1 2HU, England. [CIF reference: HH1008]

Table 2. Selected bond lengths (Å) and angles (°)

|                |           |                |           |
|----------------|-----------|----------------|-----------|
| Sia—O1a        | 1.630 (4) | Sib—O1b        | 1.633 (2) |
| Sia—O2a        | 1.644 (4) | Sib—O2b        | 1.641 (3) |
| Sia—C18a       | 1.846 (4) | Sib—C18b       | 1.853 (4) |
| Sia—C19a       | 1.845 (4) | Sib—C19b       | 1.835 (4) |
| O1a—C1a        | 1.435 (4) | O1b—C1b        | 1.439 (4) |
| O2a—C17a       | 1.372 (4) | O2b—C17b       | 1.384 (4) |
| C1a—C2a        | 1.512 (5) | C1b—C2b        | 1.508 (4) |
| C1a—C8a        | 1.536 (5) | C1b—C8b        | 1.531 (4) |
| C2a—C3a        | 1.378 (6) | C2b—C3b        | 1.378 (5) |
| C2a—C7a        | 1.390 (6) | C2b—C7b        | 1.374 (5) |
| C3a—C4a        | 1.379 (7) | C3b—C4b        | 1.391 (6) |
| C4a—C5a        | 1.383 (8) | C4b—C5b        | 1.375 (7) |
| C5a—C6a        | 1.350 (8) | C5b—C6b        | 1.352 (7) |
| C6a—C7a        | 1.378 (7) | C6b—C7b        | 1.384 (6) |
| C8a—C9a        | 1.518 (5) | C8b—C9b        | 1.520 (5) |
| C8a—Na         | 1.472 (4) | C8b—Nb         | 1.474 (4) |
| Na—C10a        | 1.463 (4) | Nb—C10b        | 1.462 (4) |
| Na—C11a        | 1.351 (4) | Nb—C11b        | 1.348 (4) |
| C11a—O3a       | 1.240 (4) | C11b—O3b       | 1.235 (4) |
| C11a—C12a      | 1.517 (5) | C11b—C12b      | 1.532 (5) |
| C12a—C13a      | 1.518 (5) | C12b—C13b      | 1.523 (5) |
| C12a—C14a      | 1.548 (5) | C12b—C14b      | 1.536 (5) |
| C14a—C15a      | 1.489 (5) | C14b—C15b      | 1.501 (5) |
| C15a—C16a      | 1.515 (6) | C15b—C16b      | 1.507 (6) |
| C15a—C17a      | 1.319 (5) | C15b—C17b      | 1.314 (5) |
| O2a—Sia—O1a    | 110.8 (2) | O2b—Sib—O1b    | 111.1 (1) |
| C18a—Sia—O1a   | 111.8 (2) | C18b—Sib—O1b   | 112.4 (1) |
| C19a—Sia—O1a   | 106.1 (2) | C19b—Sib—O1b   | 105.3 (2) |
| C18a—Sia—O2a   | 104.4 (2) | C18b—Sib—O2b   | 103.3 (2) |
| C19a—Sia—O2a   | 109.8 (2) | C19b—Sib—O2b   | 110.4 (2) |
| C19a—Sia—C18a  | 114.1 (2) | C19b—Sib—C18b  | 114.5 (2) |
| C1a—O1a—Sia    | 126.1 (2) | C1b—O1b—Sib    | 125.7 (2) |
| C17a—O2a—Sia   | 124.0 (2) | C17b—O2b—Sib   | 125.0 (2) |
| C2a—C1a—O1a    | 108.9 (3) | C2b—C1b—O1b    | 109.0 (2) |
| C8a—C1a—O1a    | 108.6 (2) | C8b—C1b—O1b    | 108.5 (2) |
| C8a—C1a—C2a    | 111.3 (3) | C8b—C1b—C2b    | 110.9 (2) |
| C9a—C8a—C1a    | 112.6 (3) | C9b—C8b—C1b    | 113.0 (3) |
| Na—C8a—C1a     | 112.8 (3) | Nb—C8b—C1b     | 113.2 (2) |
| Na—C8a—C9a     | 112.1 (3) | Nb—C8b—C9b     | 111.7 (3) |
| C10a—Na—C8a    | 114.5 (2) | C10b—Nb—C8b    | 114.6 (2) |
| C11a—Na—C8a    | 120.2 (3) | C11b—Nb—C8b    | 119.4 (2) |
| C11a—Na—C10a   | 125.3 (3) | C11b—Nb—C10b   | 125.9 (3) |
| O3a—C11a—Na    | 120.9 (3) | O3b—C11b—Nb    | 121.3 (3) |
| C12a—C11a—Na   | 120.6 (3) | C12b—C11b—Nb   | 120.4 (3) |
| C12a—C11a—O3a  | 118.5 (3) | C12b—C11b—O3b  | 118.4 (3) |
| C13a—C12a—C11a | 109.7 (3) | C13b—C12b—C11b | 109.3 (3) |
| C14a—C12a—C11a | 109.7 (3) | C14b—C12b—C11b | 108.6 (3) |
| C14a—C12a—C13a | 110.6 (3) | C14b—C12b—C13b | 111.4 (3) |
| C15a—C14a—C12a | 114.5 (3) | C16b—C15b—C14b | 117.4 (3) |
| C16a—C15a—C14a | 117.8 (3) | C17b—C15b—C14b | 122.2 (3) |
| C17a—C15a—C14a | 122.2 (3) | C17b—C15b—C16b | 120.4 (3) |
| C17a—C15a—C16a | 120.0 (4) | C15b—C17b—O2b  | 123.6 (3) |
| C15a—C17a—O2a  | 123.4 (3) |                |           |

The *y* coordinate of *Sia* was fixed to define the origin. The absolute configuration of the molecule about the C1—C2 bond was known so only the relative configurations at other chiral sites had to be determined.  $f''$  was ignored for all atoms, but  $f'$  was used for Si.

Computer programs of the *CRYM* Crystallographic Computing System (Duchamp, 1964) were used, together with *MULTAN* (Main *et al.*, 1980) and *ORTEP* (Johnson, 1976).

We gratefully acknowledge generous financial support from the National Science Foundation.

## References

- Cromer, D. T. (1974). *International Tables for X-ray Crystallography*, Vol. IV, pp. 149–151. Birmingham: Kynoch Press. (Present distributor Kluwer Academic Publishers, Dordrecht.)
- Cromer, D. T. & Waber, J. T. (1974). *International Tables for X-ray Crystallography*, Vol. IV, pp. 99–101. Birmingham: Kynoch Press. (Present distributor Kluwer Academic Publishers, Dordrecht.)
- Duchamp, D. J. (1964). Am. Crystallogr. Assoc. Meet., Bozeman, Montana, paper B-14, p. 29.
- Johnson, C. K. (1976). *ORTEP*. Report ORNL-3794, 3rd revision. Oak Ridge National Laboratory, Tennessee, USA.
- Main, P., Fiske, S. J., Hull, S. E., Lessinger, L., Germain, G., Declercq, J.-P. & Woolfson, M. M. (1980). *MULTAN80. A System of Computer Programs for the Automatic Solution of Crystal Structures from X-ray Diffraction Data*. Univs. of York, England, and Louvain, Belgium.
- Myers, A. G. & Subramanian, V. (1992). Unpublished results.
- Myers, A. G., Widdowson, K. L. & Kukkola, P. J. (1992). *J. Am. Chem. Soc.* **114**, 2765–2767.

*Acta Cryst.* (1992). **C48**, 2092–2094

## endo-2-Phenyl-exo-3,4,5-trithiatricyclo-[5.2.1.0<sup>2,6</sup>]decane exo-4-Oxide

WILLIAM H. WATSON, MARIUSZ KRAWIEC, TIRTHANKAR GHOSH AND PAUL D. BARTLETT

Department of Chemistry, Texas Christian University, Fort Worth, Texas 76129, USA

(Received 13 March 1992; accepted 29 June 1992)

## Abstract

The three S atoms add to the *exo* face of norbornene forming a slightly distorted envelope conformation for the trithiolane ring. The sulfoxide is *exo* with respect to the ring, and the O atom is 2.41(2) Å from an H on the bridging C atom. The two C—S bonds differ by 0.047(2) Å while AM1 calculations predict a difference of 0.029 Å.

## Comment

Sulfur reacts with norbornene in *N,N*-dimethylformamide at 373 K to produce the *exo*-trithianorbornane and the *exo*-pentathiene (Ghosh, 1986). Oxidation of the trithiane